

insafe®

SAFES SINCE 1840

Safe Directory



LPS 1183: Issue 4
Cert/LPCB ref. 954b



**EVERY SAFE ■ EVERY GRADE
EVERY SIZE**

Tested.
Certified.
Approved.
Safe.



LPS 1183: Issue 4
Cert/LPCB ref. 954b





SAFES SINCE 1840

Tested.

This means your safe has been independently tested to resist attack by an accredited testing house.



Certified.

The safe, manufacture and testing are independently certified.
A certification plate found on the inside of the safe door is your confirmation of this.

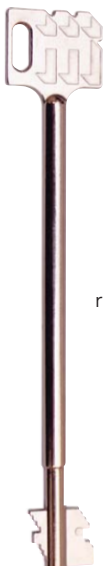


Approved.

All Insafe safes are approved by the Association of Insurance Surveyors (AiS). The AiS is a highly respected body of risk control experts working in the UK insurance market.

Safe.

Purchase an AiS approved safe and you can be safe in the knowledge that your safe is the real thing, made to protect its contents and be accepted by all major insurance companies and brokers.



How To Choose Your Safe.

There are four simple steps in selecting the right safe for your home, business or organisation.

Step 1 : Grade

This is the degree of protection the safe offers against attack. Each GRADE is awarded a CASH RATING by AiS (The Association of Insurance Surveyors).

The JEWELLERY & VALUABLES RATING is normally 10 x CASH RATING.
See the insurance rating table opposite.

Step 2 : Size

Every GRADE is available in a choice of sizes depending upon what you need to protect. Choose the size you need, giving consideration to the location and weight of the safe.

Step 3 : Locking Options

All safes are available with HIGH SECURITY KEYLOCK or ELECTRONIC DIGITAL LOCKING.

There are other options available.

Step 4 : Optional Extras

All safes are equipped with adjustable / removable shelves. Consider what you need to protect, a wide range of interior fittings are available:

- Lockable drawers • Lockable cupboards
- Heavy duty shelves
- Internal lights • Automatic watch winders
- Colour options • Glass shelving



Insurance Rating.

Insurance, overnight cash and valuables/jewellery ratings are for guidance only and you should check with your insurer for the exact requirements since the ratings may vary depending upon a number of factors including other security measures, location and the actual contents to be insured.

| SAFE | CASH RATING | JEWELLERY & VALUABLES | PAGE |
|--------------------------|-------------|-----------------------|------|
| Guardian S2 - Key | £4,000 | £40,000 | 6 |
| Guardian S2 - Electronic | £4,000 | £40,000 | 8 |
| Paramount - Key | £5,000 | £50,000 | 10 |
| Paramount - Elec | £5,000 | £50,000 | 12 |
| Britannia Grade 0 - Key | £6,000 | £60,000 | 14 |
| Britannia Grade 0 - Elec | £6,000 | £60,000 | 16 |
| EuroCash Grade 1 | £10,000 | £100,000 | 18 |
| EuroCash Grade 2 | £17,500 | £175,000 | 20 |
| EuroCash Grade 3 | £35,000 | £350,000 | 22 |
| EuroCash Grade 4 | £60,000 | £600,000 | 24 |
| EuroCash Grade 5 | £100,000 | £1 Million | 26 |
| EuroCash Grade 6 | £150,000 | £1.5 Million | 28 |



These icons help you to choose the right grade and cash / jewellery cover of safe



This icon indicates the fire protection rating



This icon indicates the length of warranty



Guardian S2

KEY LOCKING



Size 0



Ratings : Cash £4,000
Jewellery & Valuables £40,000

- Independently tested & certified against attack by LPCB to European Standard EN14450
- Approved by the Association of Insurance Surveyors (AiS)
 - 30 minute fire resistance
 - High security keylock tested to European Standard EN1300
- Interior options include shelves, drawers and cupboards
 - Bespoke sizes, interiors and finishes available
 - Digital electronic locking options
 - Available in 7 sizes



Size 0



Size 1


Size 2


Size 3



Tested. Certified. Approved. Safe™

| | Size 0  | Size 1  |
|-------------------------|------------------------------------------------------------------------------------------|------------------------------------------------------------------------------------------|
| Ext Size (HxWxD) | 275 x 325 x 325 mm | 330 x 450 x 380 mm |
| Int Size (HxWxD) | 200 x 250 x 225 mm | 255 x 375 x 285 mm |
| Volume | 11 litres | 27 litres |
| Net Weight | 26 kg | 40 kg |

| | Size 2  |
|-------------------------|------------------------------------------------------------------------------------------|
| Ext Size (HxWxD) | 430 x 360 x 400 mm |
| Int Size (HxWxD) | 355 x 285 x 295 mm |
| Volume | 30 litres |
| Net Weight | 41 kg |

| | Size 3 | Size 3 Deep  |
|-------------------------|--------------------|------------------------------------------------------------------------------------------------|
| Ext Size (HxWxD) | 470 x 490 x 410 mm | 470 x 490 x 545 mm |
| Int Size (HxWxD) | 385 x 375 x 295 mm | 385 x 375 x 430 mm |
| Volume | 42 litres | 62 litres |
| Net Weight | 56 kg | 72 kg |

| | Size 4 | Size 5 |
|-------------------------|--------------------|--------------------|
| Ext Size (HxWxD) | 660 x 490 x 410 mm | 860 x 490 x 410 mm |
| Int Size (HxWxD) | 575 x 375 x 295 mm | 775 x 375 x 295 mm |
| Volume | 63 litres | 85 litres |
| Net Weight | 73 kg | 91 kg |





Guardian S2

ELECTRONIC LOCKING



Size 3

Ratings : Cash £4,000
Jewellery & Valuables £40,000

- Independently tested & certified against attack by LPCB to European Standard EN14450
- Approved by the Association of Insurance Surveyors (AiS)
 - 30 minute fire resistance
 - High security electronic lock
- Interior options include shelves, drawers and cupboards
 - Bespoke sizes, interiors and finishes available
 - Available in 7 sizes



Size 0


Size 1

Size 2


Size 3



Tested. Certified. Approved. Safe™

| | Size 0  | Size 1  |
|-------------------------|------------------------------------------------------------------------------------------|------------------------------------------------------------------------------------------|
| Ext Size (HxWxD) | 275 x 325 x 325 mm | 330 x 450 x 380 mm |
| Int Size (HxWxD) | 200 x 250 x 225 mm | 255 x 375 x 285 mm |
| Volume | 11 litres | 27 litres |
| Net Weight | 26 kg | 40 kg |

| | Size 2  |
|-------------------------|------------------------------------------------------------------------------------------|
| Ext Size (HxWxD) | 430 x 360 x 400 mm |
| Int Size (HxWxD) | 355 x 285 x 295 mm |
| Volume | 30 litres |
| Net Weight | 41 kg |

| | Size 3 | Size 3 Deep  |
|-------------------------|--------------------|------------------------------------------------------------------------------------------------|
| Ext Size (HxWxD) | 470 x 490 x 410 mm | 470 x 490 x 545 mm |
| Int Size (HxWxD) | 385 x 375 x 295 mm | 385 x 375 x 430 mm |
| Volume | 42 litres | 62 litres |
| Net Weight | 56 kg | 72 kg |

| | Size 4 | Size 5 |
|-------------------------|--------------------|--------------------|
| Ext Size (HxWxD) | 660 x 490 x 410 mm | 860 x 490 x 410 mm |
| Int Size (HxWxD) | 575 x 375 x 295 mm | 775 x 375 x 295 mm |
| Volume | 63 litres | 85 litres |
| Net Weight | 73 kg | 91 kg |





Paramount

KEY LOCKING



Size 0

Ratings : Cash £5,000
Jewellery & Valuables £50,000

- Approved by the Association of Insurance Surveyors (AiS)
 - 30 minute fire resistance
- High security keylock tested to European Standard EN1300
 - Interior options include shelves, drawers and cupboards
 - Bespoke sizes, interiors and finishes available
 - Digital electronic locking options
 - Available in 5 sizes



Size 0

Size 1

Size 2



| | Size 0  | Size 1  |
|-------------------------|------------------------------------------------------------------------------------------|------------------------------------------------------------------------------------------|
| Ext Size (HxWxD) | 380 x 328 x 359 mm | 481 x 430 x 429 mm |
| Int Size (HxWxD) | 280 x 228 x 222 mm | 381 x 330 x 292 mm |
| Volume | 14 litres | 37 litres |
| Net Weight | 85 kg | 140 kg |

| | Size 2  | Size 3 |
|-------------------------|------------------------------------------------------------------------------------------|--------------------|
| Ext Size (HxWxD) | 608 x 430 x 429 mm | 735 x 532 x 556 mm |
| Int Size (HxWxD) | 508 x 330 x 292 mm | 635 x 432 x 419 mm |
| Volume | 49 litres | 115 litres |
| Net Weight | 165 kg | 245 kg |

| | Size 4 |
|-------------------------|--------------------|
| Ext Size (HxWxD) | 864 x 557 x 594 mm |
| Int Size (HxWxD) | 762 x 457 x 457 mm |
| Volume | 159 litres |
| Net Weight | 300 kg |





Paramount

ELECTRONIC LOCKING



Size 2

Ratings : Cash £5,000
Jewellery & Valuables £50,000

- Approved by the Association of Insurance Surveyors (AiS)
 - 30 minute fire resistance
- High security keylock tested to European Standard EN1300
 - Interior options include shelves, drawers and cupboards
 - Bespoke sizes, interiors and finishes available
 - Available in 5 sizes




Size 0

Size 1

Size 2



| | Size 0  | Size 1  |
|-------------------------|------------------------------------------------------------------------------------------|------------------------------------------------------------------------------------------|
| Ext Size (HxWxD) | 380 x 328 x 359 mm | 481 x 430 x 429 mm |
| Int Size (HxWxD) | 280 x 228 x 222 mm | 381 x 330 x 292 mm |
| Volume | 14 litres | 37 litres |
| Net Weight | 85 kg | 140 kg |

| | Size 2  | Size 3 |
|-------------------------|------------------------------------------------------------------------------------------|--------------------|
| Ext Size (HxWxD) | 608 x 430 x 429 mm | 735 x 532 x 556 mm |
| Int Size (HxWxD) | 508 x 330 x 292 mm | 635 x 432 x 419 mm |
| Volume | 49 litres | 115 litres |
| Net Weight | 165 kg | 245 kg |

| | Size 4 |
|-------------------------|--------------------|
| Ext Size (HxWxD) | 864 x 557 x 594 mm |
| Int Size (HxWxD) | 762 x 457 x 457 mm |
| Volume | 159 litres |
| Net Weight | 300 kg |





Britannia Grade 0

KEY LOCKING



Size 1

Ratings : Cash £6,000
Jewellery & Valuables £60,000

- Independently tested & certified against attack by LPCB to European Standard EN1143
- Approved by the Association of Insurance Surveyors (AiS)
 - 30 minute fire resistance
- High security keylock tested to European Standard EN1300
- Interior options include shelves, drawers and cupboards
 - Bespoke sizes, interiors and finishes available
 - Digital electronic locking options
 - Available in 6 sizes



Size 0



Size 1


Size 2

Size 3



Tested. Certified. Approved. Safe™

| | Size 0  | Size 1  |
|-------------------------|------------------------------------------------------------------------------------------|------------------------------------------------------------------------------------------|
| Ext Size (HxWxD) | 455 x 405 x 370 mm | 455 x 455 x 457 mm |
| Int Size (HxWxD) | 355 x 305 x 220 mm | 355 x 355 x 307 mm |
| Volume | 24 litres | 39 litres |
| Net Weight | 112 kg | 146 kg |

| | Size 2  | Size 3 |
|-------------------------|------------------------------------------------------------------------------------------|--------------------|
| Ext Size (HxWxD) | 585 x 405 x 457 mm | 685 x 520 x 607 mm |
| Int Size (HxWxD) | 485 x 305 x 307 mm | 585 x 420 x 457 mm |
| Volume | 45 litres | 112 litres |
| Net Weight | 168 kg | 260 kg |

| | Size 4 | Size 5 |
|-------------------------|--------------------|---------------------|
| Ext Size (HxWxD) | 800 x 550 x 632 mm | 1000 x 610 x 707 mm |
| Int Size (HxWxD) | 700 x 450 x 482 mm | 900 x 510 x 557 mm |
| Volume | 152 litres | 256 litres |
| Net Weight | 315 kg | 441 kg |





Britannia Grade 0

ELECTRONIC LOCKING



Size 2

Ratings : Cash £6,000
Jewellery & Valuables £60,000

- Independently tested & certified against attack by LPCB to European Standard EN1143
- Approved by the Association of Insurance Surveyors (AiS)
 - 30 minute fire resistance
- High security keylock tested to European Standard EN1300
- Interior options include shelves, drawers and cupboards
 - Bespoke sizes, interiors and finishes available
 - Available in 6 sizes



Size 0


Size 1


Size 2

Size 3



Tested. Certified. Approved. Safe™

| | Size 0  | Size 1  |
|-------------------------|------------------------------------------------------------------------------------------|------------------------------------------------------------------------------------------|
| Ext Size (HxWxD) | 455 x 405 x 370 mm | 455 x 455 x 457 mm |
| Int Size (HxWxD) | 355 x 305 x 220 mm | 355 x 355 x 307 mm |
| Volume | 24 litres | 39 litres |
| Net Weight | 112 kg | 146 kg |

| | Size 2  | Size 3 |
|-------------------------|------------------------------------------------------------------------------------------|--------------------|
| Ext Size (HxWxD) | 585 x 405 x 457 mm | 685 x 520 x 607 mm |
| Int Size (HxWxD) | 485 x 305 x 307 mm | 585 x 420 x 457 mm |
| Volume | 45 litres | 112 litres |
| Net Weight | 168 kg | 260 kg |

| | Size 4 | Size 5 |
|-------------------------|--------------------|---------------------|
| Ext Size (HxWxD) | 800 x 550 x 632 mm | 1000 x 610 x 707 mm |
| Int Size (HxWxD) | 700 x 450 x 482 mm | 900 x 510 x 557 mm |
| Volume | 152 litres | 256 litres |
| Net Weight | 315 kg | 441 kg |





EuroCash Grade 1

KEY OR ELECTRONIC LOCKING



Ratings : Cash £10,000
Jewellery & Valuables £100,000

- Independently tested and certified against attack by LPCB to European Standard EN1143
- Approved by the Association of Insurance Surveyors (AiS)
 - 60 minute fire tested and certified by SP Laboratory
- High security keylock tested to European Standard EN1300
- Intelligent time delay and programmable locking options
- Interior options include shelves, drawers and cupboards
 - Bespoke sizes, interiors and finishes available
 - Digital electronic locking options
 - Available in 8 sizes





Tested. Certified. Approved. Safe™

| | Size 0  | Size 1  |
|------------------|------------------------------------------------------------------------------------------|------------------------------------------------------------------------------------------|
| Ext Size (HxWxD) | 455 x 405 x 370 mm | 455 x 455 x 465 mm |
| Int Size (HxWxD) | 355 x 305 x 180 mm | 355 x 355 x 275 mm |
| Volume | 19 litres | 35 litres |
| Net Weight | 98 kg | 118 kg |
| | Size 2  | Size 3 |
| Ext Size (HxWxD) | 585 x 405 x 465 mm | 685 x 520 x 615 mm |
| Int Size (HxWxD) | 485 x 305 x 275 mm | 585 x 420 x 425 mm |
| Volume | 40 litres | 105 litres |
| Net Weight | 131 kg | 207 kg |
| | Size 4 | Size 5 |
| Ext Size (HxWxD) | 800 x 550 x 640 mm | 1000 x 610 x 715 mm |
| Int Size (HxWxD) | 700 x 450 x 450 mm | 900 x 510 x 525 mm |
| Volume | 142 litres | 240 litres |
| Net Weight | 247 kg | 337 kg |
| | Size 6 | Size 7 |
| Ext Size (HxWxD) | 1200 x 610 x 715 mm | 1400 x 610 x 715 mm |
| Int Size (HxWxD) | 1100 x 510 x 525 mm | 1300 x 510 x 525 mm |
| Volume | 295 litres | 348 litres |
| Net Weight | 394 kg | 447 kg |





EuroCash Grade 2

KEY OR ELECTRONIC LOCKING



Ratings : Cash £17,500
Jewellery & Valuables £175,000

- Independently tested and certified against attack by VdS to European Standard EN1143
- Approved by the Association of Insurance Surveyors (AiS)
 - 60 minute fire tested and certified by SP Laboratory
- High security keylock tested to European Standard EN1300
- Intelligent time delay and programmable locking options
- Interior options include shelves, drawers and cupboards
 - Bespoke sizes, interiors and finishes available
 - Digital electronic locking options
 - Available in 8 sizes





Tested. Certified. Approved. Safe™

| | Size 1 | Size 2 |
|-------------------------|--------------------|--------------------|
| Ext Size (HxWxD) | 485 x 485 x 498 mm | 615 x 435 x 498 mm |
| Int Size (HxWxD) | 355 x 355 x 275 mm | 485 x 305 x 275 mm |
| Volume | 35 litres | 40 litres |
| Net Weight | 178 kg | 186 kg |

| | Size 3 | Size 4 |
|-------------------------|--------------------|--------------------|
| Ext Size (HxWxD) | 715 x 550 x 648 mm | 830 x 580 x 673 mm |
| Int Size (HxWxD) | 585 x 420 x 425 mm | 700 x 450 x 450 mm |
| Volume | 104 litres | 142 litres |
| Net Weight | 284 kg | 339 kg |

| | Size 5 | Size 6 |
|-------------------------|---------------------|---------------------|
| Ext Size (HxWxD) | 1030 x 640 x 748 mm | 1230 x 640 x 748 mm |
| Int Size (HxWxD) | 900 x 510 x 525 mm | 1100 x 510 x 525 mm |
| Volume | 240 litres | 294 litres |
| Net Weight | 444 kg | 514 kg |

| | Size 7 | Size 8 |
|-------------------------|---------------------|---------------------|
| Ext Size (HxWxD) | 1430 x 640 x 748 mm | 1730 x 800 x 693 mm |
| Int Size (HxWxD) | 1300 x 510 x 525 mm | 1600 x 670 x 470 mm |
| Volume | 348 litres | 503 litres |
| Net Weight | 579 kg | 738 kg |





EuroCash Grade 3

KEY OR ELECTRONIC LOCKING



Size 3

Size 1

Ratings : Cash £35,000
Jewellery & Valuables £350,000

- Independently tested and certified against attack by LPCB to European Standard EN1143
- Approved by the Association of Insurance Surveyors (AiS)
 - 60 minute fire tested and certified by SP Laboratory
- High security keylock tested to European Standard EN1300
- Intelligent time delay and programmable locking options
- Interior options include shelves, drawers and cupboards
 - Bespoke sizes, interiors and finishes available
 - Digital electronic locking options
 - Available in 8 sizes



Size 1

Size 2

Size 3

Size 4

Size 5



Tested. Certified. Approved. Safe™

| | Size 1  | Size 2  |
|-------------------------|------------------------------------------------------------------------------------------|------------------------------------------------------------------------------------------|
| Ext Size (HxWxD) | 485 x 485 x 498 mm | 615 x 435 x 498 mm |
| Int Size (HxWxD) | 355 x 355 x 275 mm | 485 x 305 x 275 mm |
| Volume | 35 litres | 40 litres |
| Net Weight | 178 kg | 186 kg |
| | Size 3 | Size 4 |
| Ext Size (HxWxD) | 715 x 550 x 648 mm | 830 x 580 x 673 mm |
| Int Size (HxWxD) | 585 x 420 x 425 mm | 700 x 450 x 450 mm |
| Volume | 105 litres | 142 litres |
| Net Weight | 284 kg | 339 kg |
| | Size 5 | Size 6 |
| Ext Size (HxWxD) | 1030 x 640 x 748 mm | 1230 x 640 x 748 mm |
| Int Size (HxWxD) | 900 x 510 x 525 mm | 1100 x 510 x 525 mm |
| Volume | 240 litres | 295 litres |
| Net Weight | 444 kg | 514 kg |
| | Size 7 | Size 8 |
| Ext Size (HxWxD) | 1430 x 640 x 748 mm | 1730 x 800 x 693 mm |
| Int Size (HxWxD) | 1300 x 510 x 525 mm | 1600 x 670 x 470 mm |
| Volume | 348 litres | 503 litres |
| Net Weight | 579 kg | 738 kg |





EuroCash Grade 4

KEY OR ELECTRONIC LOCKING



Size 4



Size 3

Ratings : Cash £60,000
Jewellery & Valuables £600,000

- Independently tested and certified against attack by LPCB to European Standard EN1143
- Approved by the Association of Insurance Surveyors (AiS)
 - 90 minute fire tested and certified by SP Laboratory
- High security keylock tested to European Standard EN1300
- Intelligent time delay and programmable locking options
- Interior options include shelves, drawers and cupboards
 - Bespoke sizes, interiors and finishes available
 - Digital electronic locking options
- Available in 6 sizes



Size 3

Size 4

Size 5



Tested. Certified. Approved. Safe™

| | Size 3 | Size 4 |
|-------------------------|--------------------|--------------------|
| Ext Size (HxWxD) | 715 x 550 x 648 mm | 830 x 580 x 673 mm |
| Int Size (HxWxD) | 585 x 420 x 425 mm | 700 x 450 x 450 mm |
| Volume | 105 litres | 142 litres |
| Net Weight | 385 kg | 455 kg |

| | Size 5 | Size 6 |
|-------------------------|---------------------|---------------------|
| Ext Size (HxWxD) | 1030 x 640 x 748 mm | 1230 x 640 x 748 mm |
| Int Size (HxWxD) | 900 x 510 x 525 mm | 1100 x 510 x 525 mm |
| Volume | 240 litres | 295 litres |
| Net Weight | 612 kg | 714 kg |

| | Size 7 | Size 8 |
|-------------------------|---------------------|---------------------|
| Ext Size (HxWxD) | 1430 x 640 x 748 mm | 1730 x 800 x 693 mm |
| Int Size (HxWxD) | 1300 x 510 x 525 mm | 1600 x 670 x 470 mm |
| Volume | 348 litres | 503 litres |
| Net Weight | 812 kg | 1086 kg |





EuroCash Grade 5

KEY OR ELECTRONIC LOCKING



Size 5

Size 4

Ratings : Cash £100,000
Jewellery & Valuables £1,000,000

- Independently tested and certified against attack by LPCB to European Standard EN1143
- Approved by the Association of Insurance Surveyors (AiS)
 - 90 minute fire tested and certified by SP Laboratory
- High security keylock tested to European Standard EN1300
- Intelligent time delay and programmable locking options
- Interior options include shelves, drawers and cupboards
 - Bespoke sizes, interiors and finishes available
 - Digital electronic locking options
 - Available in 6 sizes



Size 3

Size 4

Size 5

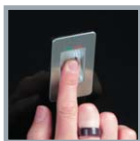


Tested. Certified. Approved. Safe™

| | Size 3 | Size 4 |
|-------------------------|--------------------|--------------------|
| Ext Size (HxWxD) | 715 x 550 x 648 mm | 830 x 580 x 673 mm |
| Int Size (HxWxD) | 585 x 420 x 425 mm | 700 x 450 x 450 mm |
| Volume | 105 litres | 142 litres |
| Net Weight | 385 kg | 455 kg |

| | Size 5 | Size 6 |
|-------------------------|---------------------|---------------------|
| Ext Size (HxWxD) | 1030 x 640 x 748 mm | 1230 x 640 x 748 mm |
| Int Size (HxWxD) | 900 x 510 x 525 mm | 1100 x 510 x 525 mm |
| Volume | 240 litres | 295 litres |
| Net Weight | 612 kg | 714 kg |

| | Size 7 | Size 8 |
|-------------------------|---------------------|---------------------|
| Ext Size (HxWxD) | 1430 x 640 x 748 mm | 1730 x 800 x 693 mm |
| Int Size (HxWxD) | 1300 x 510 x 525 mm | 1600 x 670 x 470 mm |
| Volume | 348 litres | 503 litres |
| Net Weight | 812 kg | 1086 kg |



Safe Options





EuroCash Grade 6

KEY OR ELECTRONIC LOCKING



Size 4

Size 3

Ratings : Cash £150,000
Jewellery & Valuables £1,500,000

- Independently tested and certified against attack by LPCB to European Standard EN1143
- Approved by the Association of Insurance Surveyors (AiS)
 - 90 minute fire tested and certified by SP Laboratory
- High security keylock tested to European Standard EN1300
- Intelligent time delay and programmable locking options
- Interior options include shelves, drawers and cupboards
 - Bespoke sizes, interiors and finishes available
 - Digital electronic locking options
 - Available in 5 sizes



Size 3

Size 4

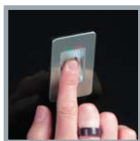


Tested. Certified. Approved. Safe™

| | Size 3 | Size 4 |
|-------------------------|--------------------|---------------------|
| Ext Size (HxWxD) | 790 x 690 x 730 mm | 1090 x 690 x 730 mm |
| Int Size (HxWxD) | 600 x 500 x 450 mm | 900 x 500 x 450 mm |
| Volume | 135 litres | 202 litres |
| Net Weight | 720 kg | 924 kg |

| | Size 5 | Size 6 |
|-------------------------|---------------------|---------------------|
| Ext Size (HxWxD) | 1390 x 690 x 830 mm | 1590 x 690 x 830 mm |
| Int Size (HxWxD) | 1200 x 500 x 550 mm | 1400 x 500 x 550 mm |
| Volume | 330 litres | 385 litres |
| Net Weight | 1219 kg | 1359 kg |

| | Size 7 |
|-------------------------|---------------------|
| Ext Size (HxWxD) | 1890 x 940 x 830 mm |
| Int Size (HxWxD) | 1700 x 750 x 550 mm |
| Volume | 701 litres |
| Net Weight | 1898 kg |



Safe Options



Designer Safes.

**Some of the features and options available on
our designer range of safes:**

- Tested and certified in the UK by LPCB and approved by AiS
 - Fire tested by SP Laboratory
- High security keylock tested to European Standard EN1300
 - Internal power • Interior LED lighting • Glass shelving
- Leather trim • Mirror walls • Watch winders • Colour options
 - Bespoke jewellery trays, drawers and cupboards

Digital electronic locking options include:

- Intelligent time delay and programmable locking
 - Fingerprint recognition locking



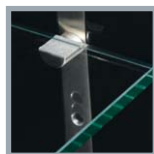
High-shine
finish



Tested and certified



Finger-print recognition



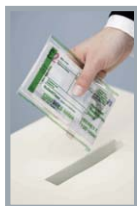
Glass shelving



Safes for those requiring
that little bit more.

Drop Safes.

All of our European graded safes can be fitted with deposit features, internal cupboards, air tubes, CIT features, time delay, audit and internet remote control locks.



INSAFE ARE EXPERTS IN
BESPOKE AND SPECIALIST SAFES.

Fire Guardian

Fire Resistant Filing Cabinets.



Fire Guardian 60

Key or Electronic Locking

1 hour fire resistant filing cabinets are fire tested for paper at 1,010°C ensuring superb protection for your documents.

- Tested and Certified by Underwriters Laboratories of USA
 - One Hour Fire Tested for Paper at 1,010°C
 - 6 Lever Security Locking and Emergency Latch
 - Double Extension Sliding Drawers

| | 2 Drawer | 3 Drawer |
|-------------------------|---------------------|---------------------|
| Ext Size (HxWxD) | 778 x 534 x 665 mm | 1156 x 534 x 665 mm |
| Int Size (HxWxD) | 280 x 388 x 499 mm | 280 x 388 x 499 mm |
| Fire Rating | 1 hour | 1 hour |
| Net Weight | 175 kg | 275 kg |
| | 4 Drawer | |
| Ext Size (HxWxD) | 1534 x 534 x 665 mm | |
| Int Size (HxWxD) | 280 x 388 x 499 mm | |
| Volume | 1 hour | |
| Net Weight | 375 kg | |

Fire Guardian 120

2 hour fire resistant filing cabinets also available.



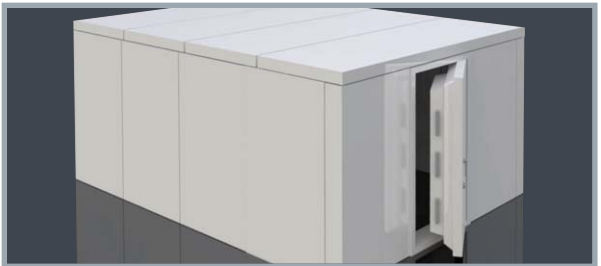
...and



Bankers Till Drawers



Fire Safes



Vaults



Vault Doors



Grille Gates



Hotel Safes



Counter Note Safes

MORE



Key Cabinets



Cash Boxes



Security Cabinets



Drawer Deposits



Underfloor Safes



Counter Deposit Safes



Gun Safes

Your last line of defence...



insafe®



Assessed to ISO 9001
LPCB Cert No. 1106



© 2017 - The Insafe logo is a registered trade mark of Insafe International Limited which includes the Pantone 268C purple square. The statements "Tested. Certified. Approved. Safe." and "Your Last Line of Defence" are all trade marks of Insafe International Limited.

Cash, jewellery and valuable ratings are recommended. Positioning of the safe, type of premises, location and other security measures may also affect ratings. Detail, imagery and specifications contained within this publication may vary. All dimensions, weights and capacities are approximate.